

Fran Reich Preserve Site 1 Impoundment

Facts & Information

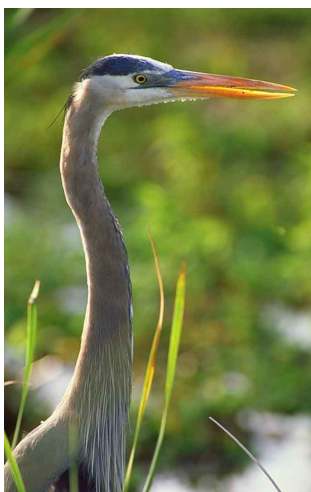


US Army Corps
of Engineers
Jacksonville District



August 2010

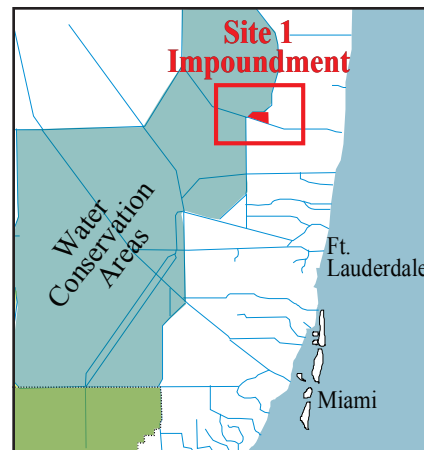
The Site 1 Impoundment / Fran Reich Preserve Project, a component of the Comprehensive Everglades Restoration Plan (CERP), will capture and store excess surface water runoff from the Hillsboro watershed as well as releases from the Arthur R. Marshall Loxahatchee National Wildlife Refuge and Lake Okeechobee. Located in the Hillsboro Canal Basin in southern Palm Beach County, the project will supplement water deliveries to the Hillsboro Canal by capturing and storing excess water currently discharged to the Atlantic Intracoastal Waterway. These supplemental deliveries will reduce demands on the Loxahatchee National Wildlife Refuge (LNWR). The 1,660 acre impoundment will also provide groundwater recharge, reduce seepage from adjacent natural areas, and prevent saltwater intrusion by releasing impounded water back to the Hillsboro Canal when conditions dictate.



The CERP non-federal sponsor, the South Florida Water Management District, transferred the lead role for project design and construction to the U.S. Army Corps of Engineers. The project includes a 1,660-acre above-ground reservoir, an inflow pump station, discharge gated culvert, emergency overflow spillway and a seepage control canal with associated features.

Project Split into Two

The original acquisition strategy for the Site 1 project involved only one contract. Congress authorized project construction funds from the American Recovery and Reinvestment Act (ARRA) of 2009; however, this was not enough to fund the entire project's construction. Also, due to ARRA funding guidelines, the project team had to identify



a standalone and usable portion of the project to execute the ARRA funds. The D-525N embankment (L-40 modifications) and construction of the S-530 spillway were identified as a standalone and usable portion of the project providing seepage and risk reduction benefits. Separating

the contracts allows the Corps to begin construction this year and provides the design team time to redesign the D-525 embankment so it more quickly benefits wildlife.

The first contract, D-525N (L-40 Modifications) and Miscellaneous Features, includes clearing, grubbing and dewatering activities, demolition work, establishing onsite borrow and disposal areas, earthwork modifications to about 15,000-linear feet of the existing L-40 levee, installing dam monitoring instrumentation, and emplacing turf reinforcement mat and soil cement. The project also includes constructing a six-acre wildlife wetland area and auxiliary spillway, S-530, located in D-525N.

These Phase 1 features will reduce the amount of seepage loss from the adjacent LNWR, also known as Water Conservation Area 1. Reducing seepage will help increase the amount of water that remains in that natural system, especially during dry periods. Maintaining the additional water will allow for ecological habitat improvements in the LNWR. Additionally, a recent Corps of Engineers Dam Safety inspection rated the L-40 levee as "minimally acceptable" – reinforcing and enhancing the existing L-40 levee section will provide risk reduction benefits.

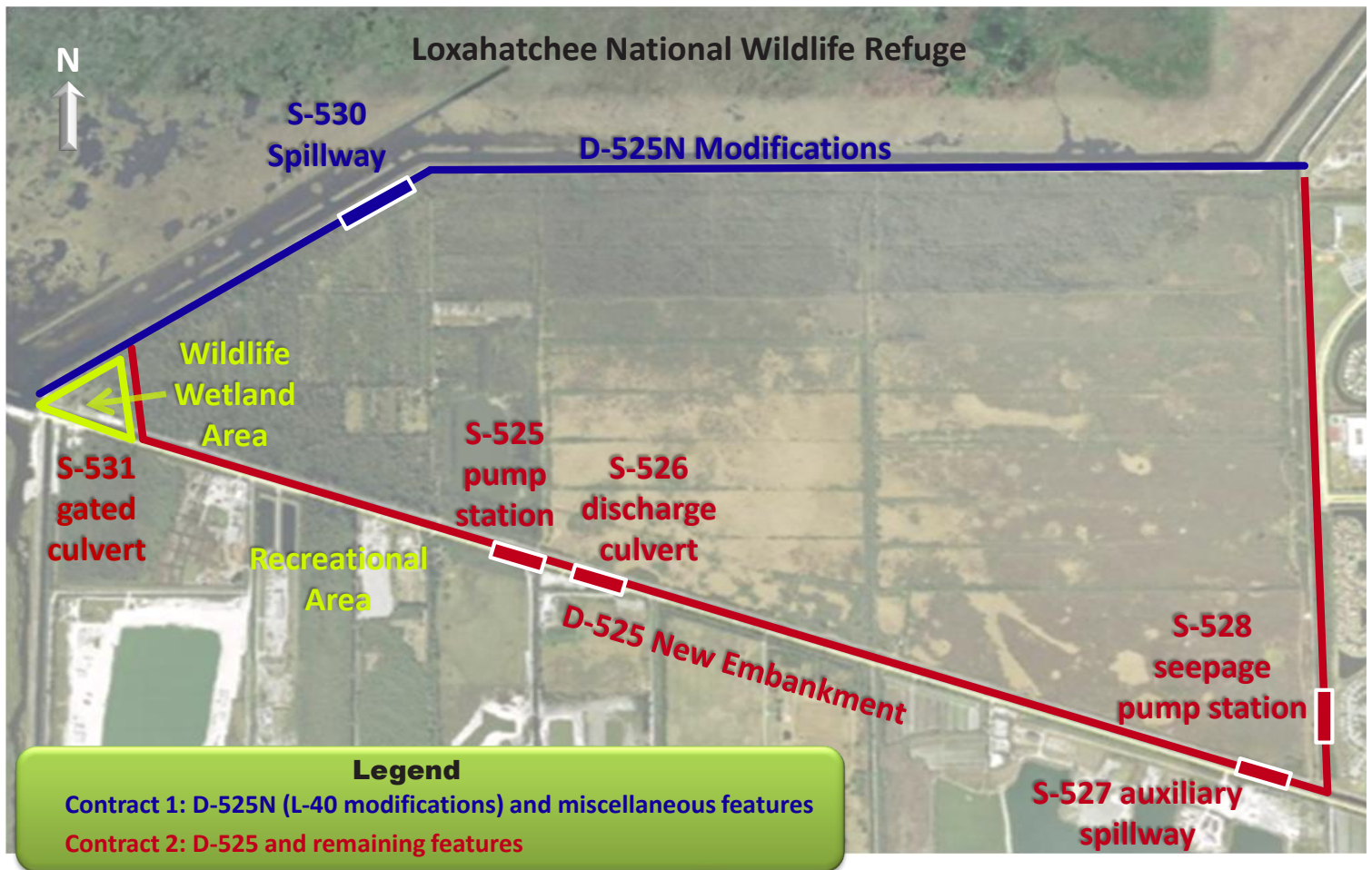
Facts & Information

A second phase and second contract will essentially complete the Site 1 Impoundment project. Work will include site clearing, grubbing, miscellaneous demolitions, excavation and filling, construction of inflow and seepage pump stations, associated impoundment structures, canal improvements, D-525 embankment, embankment instrumentation, placement of turf reinforcement, placement of smooth flat plate soil cement on embankment interior and other miscellaneous site work such as security fencing, gates, paving, storm structures, site pads, weep

holes and a recreational area. These contract tasks are only draft; the Corps will finalize features in the contract design, which it anticipates completing in 2011.

The Site 1 Impoundment Project is a 50/50 cost-share. The Corps anticipates Contract 1 construction October 2010 through October 2012, and Contract 2 construction from September 2011 through March 2014.

Site 1 Impoundment Project



For More Information



**US Army Corps
of Engineers®**
Jacksonville District

Project Manager
Jason Harrah
P.O. Box 4970
Jacksonville, FL 32232-0019
(904) 232-1381
jason.s.harrah@usace.army.mil
www.saj.usace.army.mil



sfwmd.gov

Project Manager
Jeff Needle
3301 Gun Club Road, Unit 150
West Palm Beach, FL 33406
(561) 682-6865
jneedle@sfwmd.gov